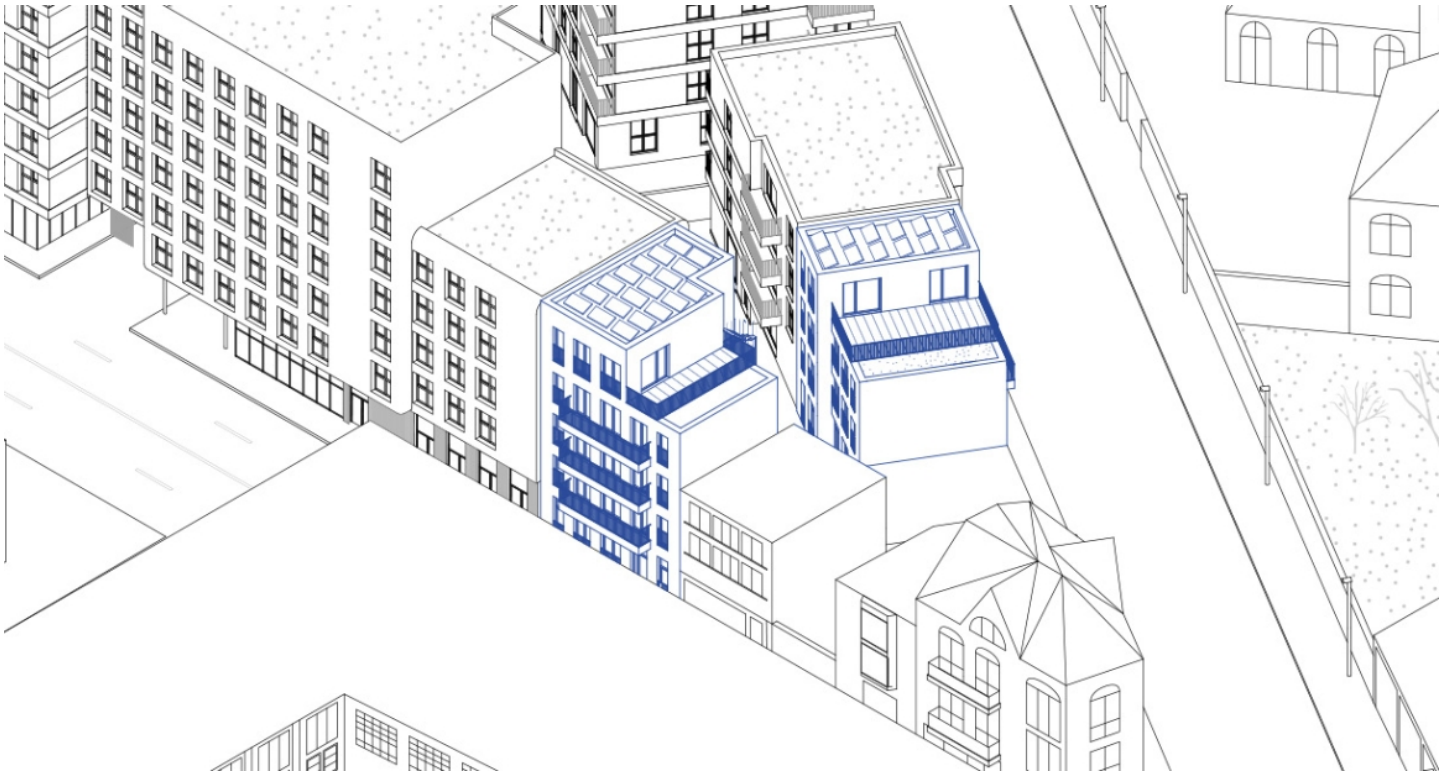


**MIPIM
2025**



Rue des deux gares

BRUSSELS

AAFH! Architecte

Location

Rue des deux Gares
1070 Bruxelles- Belgium

Contact

jesus@aafh.be
frederic@aafh.be

Rue des deux gares:

The project is located in Anderlecht, near the Gare du Midi, facing the Cureghem veterinary clinics, and features a mixed-use program of 11 housing units.

A narrow plot connects two parcels and creates a transition between a large residential complex and a

traditional townhouse. The area is densified while ensuring a smooth continuity with the existing built environment.

Ranging from studios to duplexes, the brick-built project carries strong ambitions: offering a diverse range of homes, each with its own outdoor space (garden or terrace) along with through-living rooms and double-aspect apartments.

The architectural approach is based on similar window module and a simple, integrated design that resonates with the brick heritage of the former veterinary clinics.

Architects

Frédéric Haesevoets/ Jesus Martinez Garcia

Searching for

Construction firm

Timing

2025-2027

Sustainability project

Maximizing permeable ground surfaces. Self-sufficiency in water management and electricity.

Land

1433 m²

